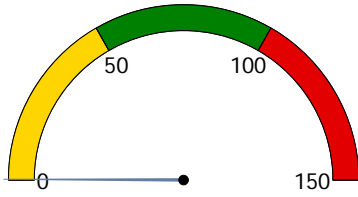


EPMS Dashboard Production Summary

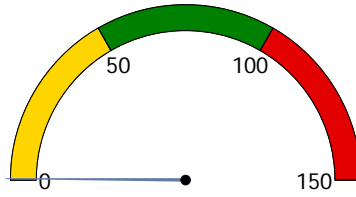
Date Range: 3/1/2008-3/31/2008

Prepress (Workload)



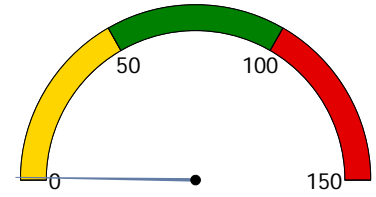
0.17% Filled
Capacity: 504.00
Scheduled: 0.85
Difference: -503.15

Plates (Workload)



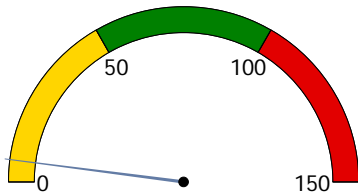
0.32% Filled
Capacity: 168.00
Scheduled: 0.54
Difference: -167.46

Press (Workload)



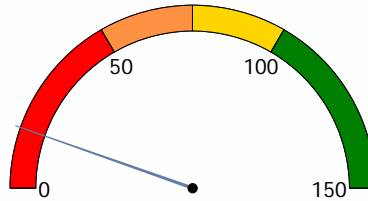
0.70% Filled
Capacity: 336.00
Scheduled: 2.36
Difference: -333.64

Postpress (Workload)



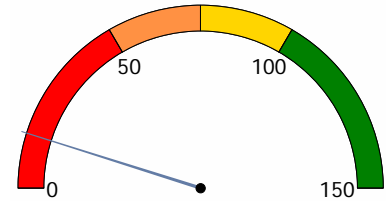
6% Filled
Capacity: 2352.00
Scheduled: 143.40
Difference: -2208.60

Prepress (Productivity)



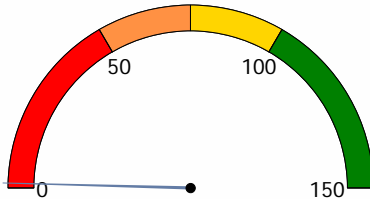
16% Productivity
Capacity: 504.00
Actual: 81.45
Difference: -422.55

Press (Productivity)



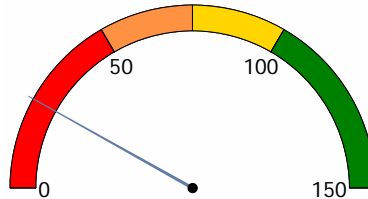
15% Productivity
Capacity: 336.00
Actual: 49.05
Difference: -286.95

Prepress (Efficiency)



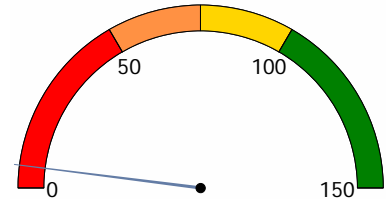
1% Effective
Planned: 1.03
Actual: 81.45
Difference: 80.42

Plates (Efficiency)



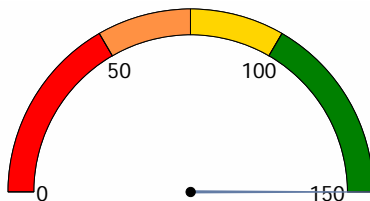
24% Effective
Planned: 0.81
Actual: 3.33
Difference: 2.52

Press (Efficiency)



6% Effective
Planned: 2.94
Actual: 49.05
Difference: 46.11

Postpress (Efficiency)



655% Effective
Planned: 155.02
Actual: 23.67
Difference: -131.35